

52 TOWNHOUSES, GARAGES AND COMMUNAL AREAS

Parcela TB-52, UE-05 PERI "5", Urbanización Torreblanca
del Sol, Fuengirola - Málaga

TOWNHOUSE KA-20

3 BEDROOMS
Block 3

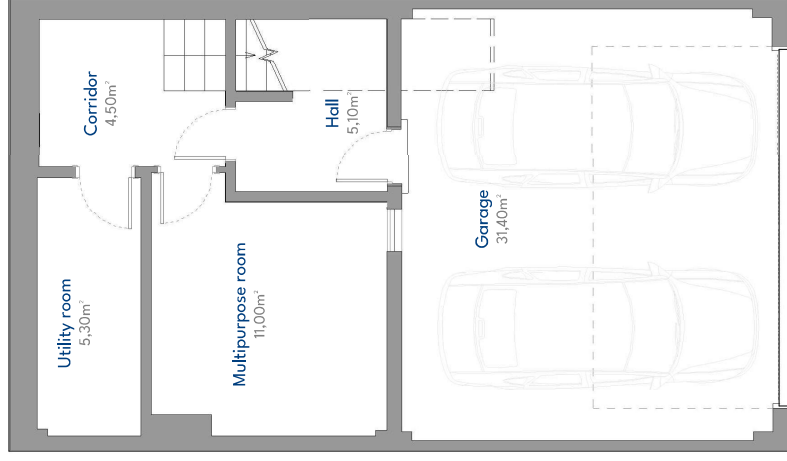
BUILT AREA

Living Area	210,75 m ²
Terrace Area	19,13 m ²
Garden + Uncovered terrace	51,71 m ²
TOTAL BUILT AREA	281,59 m²

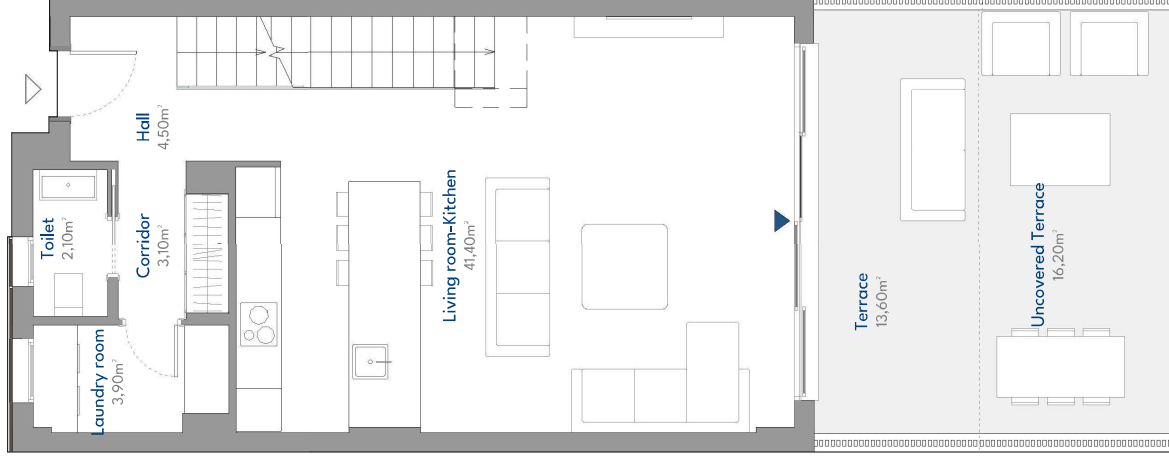
ACCORDING TO RD 218/2005

Useful Area	133,68 m ²
Built Area	171,61 m ²

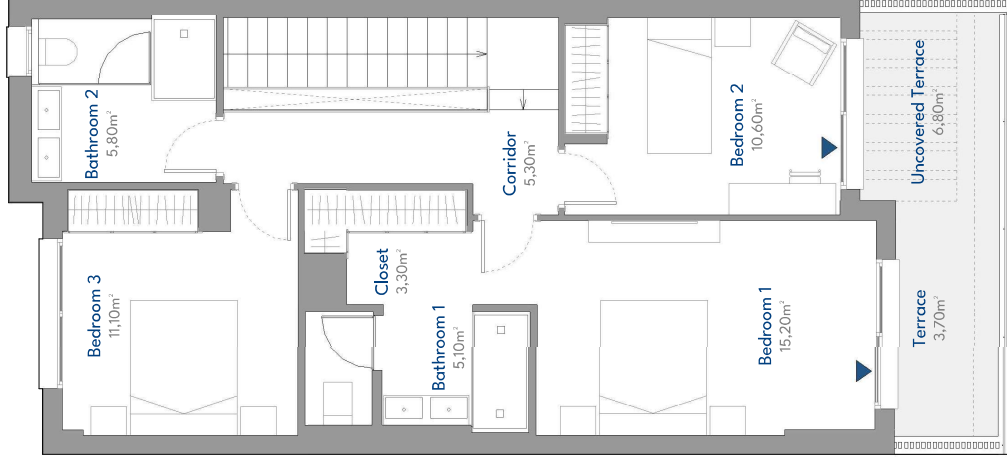
LOCATION PLAN



Basement Floor



Ground Floor



First Floor



Edition N°: V2
17 March 2026

(*) This plan is subject to modifications depending on the progress of the development. The furniture shown is for decorative purposes only. The Project Management reserves the right to make any changes required for functional, aesthetic or legal reasons, without implying any reduction in construction quality. Dimensions are approximate.

KALALA

RESIDENCES

52 TOWNHOUSES, GARAGES AND COMMUNAL AREAS

Parcela TB-52, UE-05 PERI "5"- Urbanización Torreblanca
del Sol, Fuengirola - Málaga

TOWNHOUSE KA-20

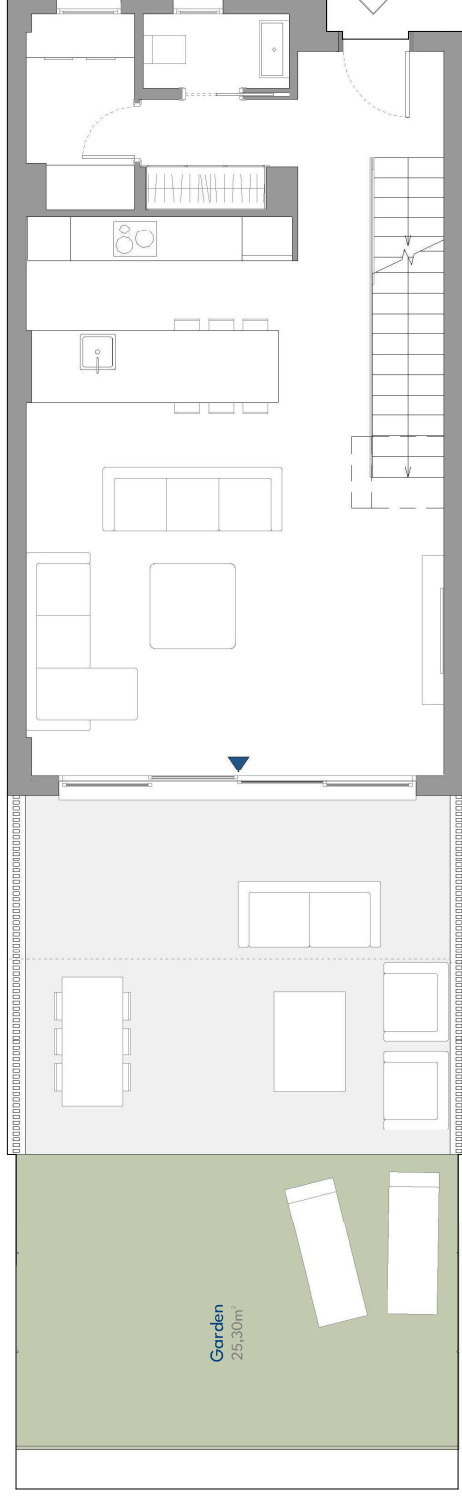
3 BEDROOMS
Block 3

BUILT AREA

Living Area	210,75 m ²
Terrace Area	19,13 m ²
Garden + Uncovered terrace	51,71 m ²
TOTAL BUILT AREA	281,59 m²

ACCORDING TO RD 218/2005

Useful Area	133,68 m ²
Built Area	171,61 m ²



LOCATION PLAN



Edition N°: V2
17 March 2026

(*) This plan is subject to modifications depending on the progress of the development. The furniture shown is for decorative purposes only. The Project Management reserves the right to make any changes required for functional, aesthetic or legal reasons, without implying any reduction in construction quality. Dimensions are approximate.