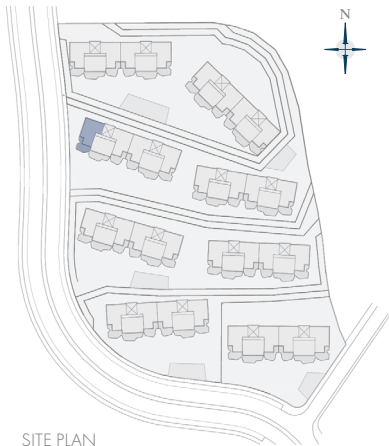


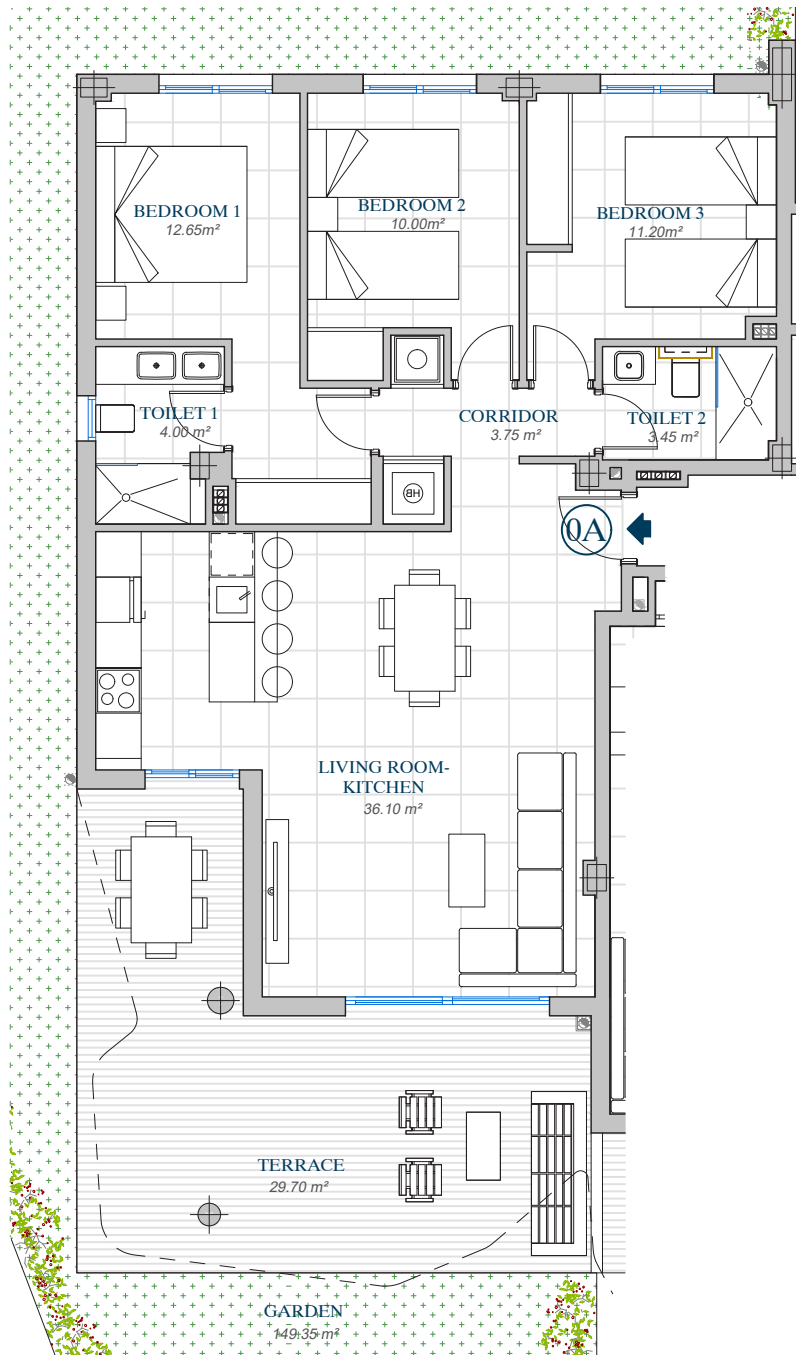


LOMAS DEL
HIGUERÓN
by TOP GESTIÓN

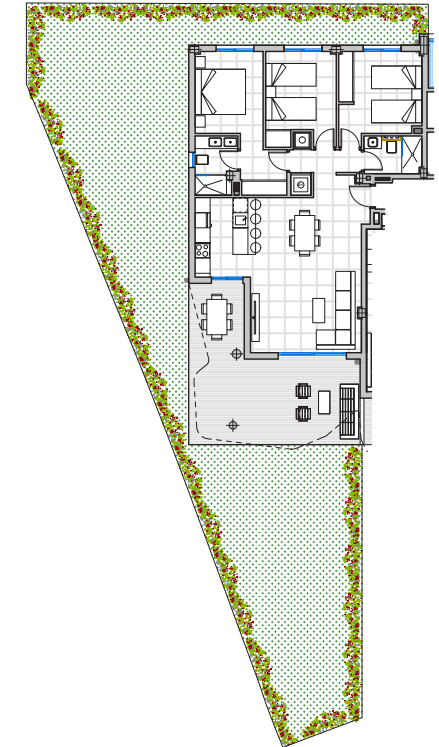
PORTAL 5
APARTMENT N° 41
O A



SITE PLAN



"This plan may be modified according to the development of the Execution Project and the construction. It does not constitute a contractual document. The reflected furnishing is for decoration purposes only. The Project Management reserves the right to make the necessary changes for functional, esthetic and legal reasons that may occur, without implying a decrease in the quality of the construction".



AREA ACCORDING TO DECREE 218/2005	
Useful Area	89,25 m ²
Built Area	138,95 m ²
BUILT AREA	
Living Area	93,10 m ²
Terrace Area	29,70 m ²
Garden	149,35 m ²
TOTAL BUILT AREA:	272,15 m²



GRAPHIC SCALE

