



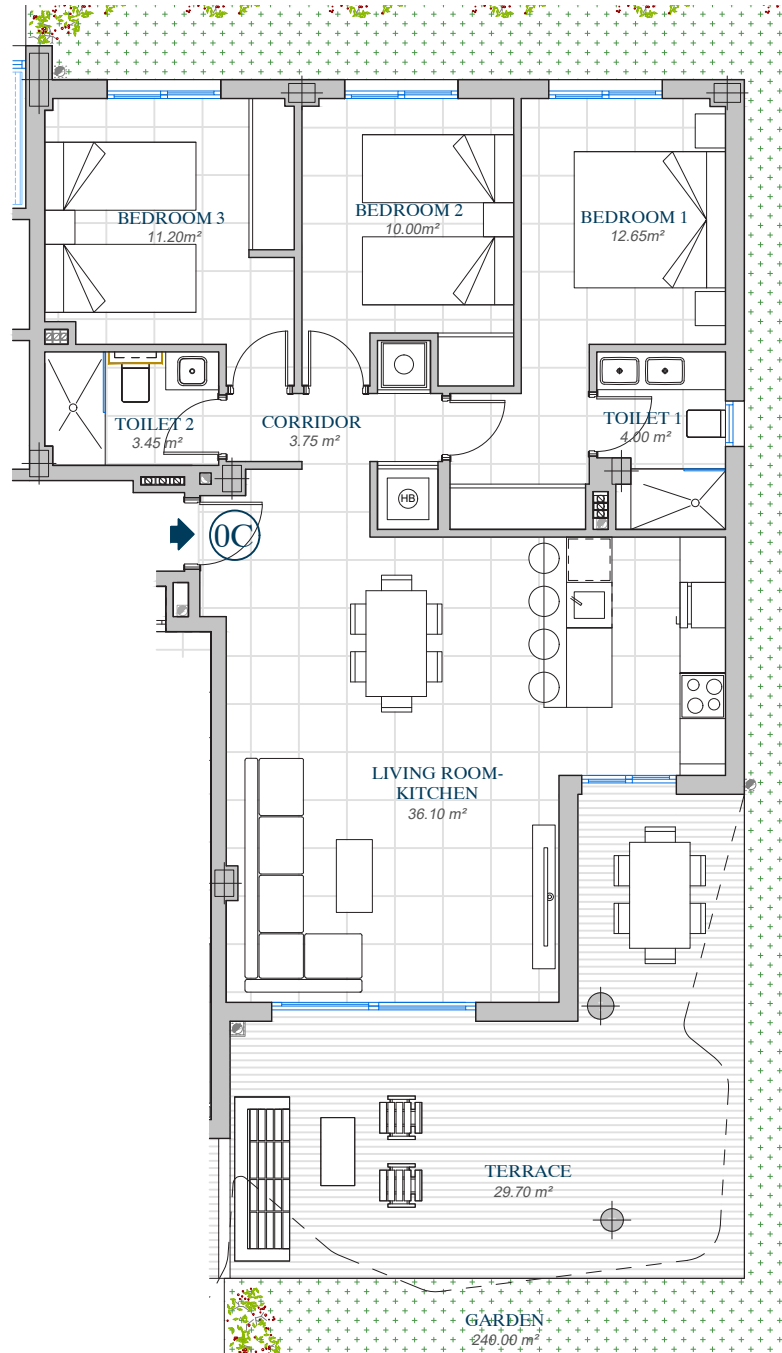
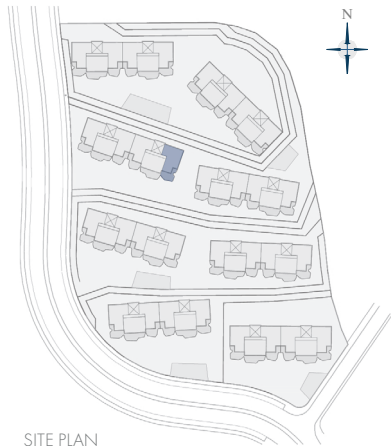
LOMAS DEL
HIGUERÓN
by TOP GESTIÓN

LOMAS 2

PORTAL 6

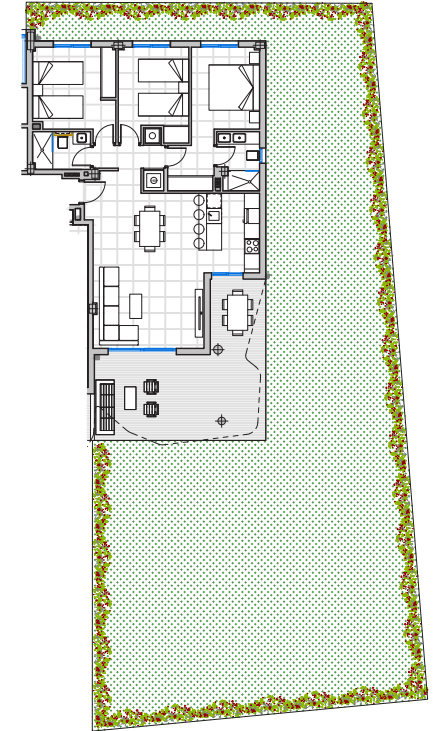
APARTMENT Nº 53

O C



"This plan may be modified according to the development of the Execution Project and the construction. It does not constitute a contractual document. The reflected furnishing is for decoration purposes only. The Project Management reserves the right to make the necessary changes for functional, esthetic and legal reasons that may occur, without implying a decrease in the quality of the construction".

HIGUERÓN
Resort



BUILT AREA

Living Area	93,10 m ²
Terrace Area	29,70 m ²
Garden	240,00 m ²
TOTAL BUILT AREA:	362,80m²



GRAPHIC SCALE

