



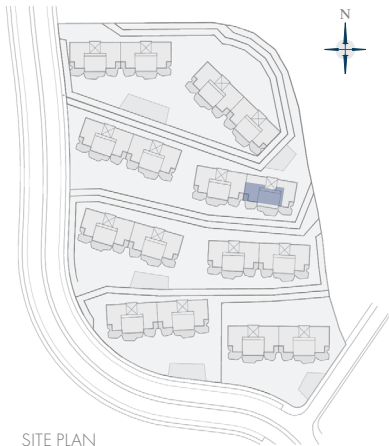
LOMAS DEL
HIGUERÓN
by TOP GESTIÓN

LOMAS 2

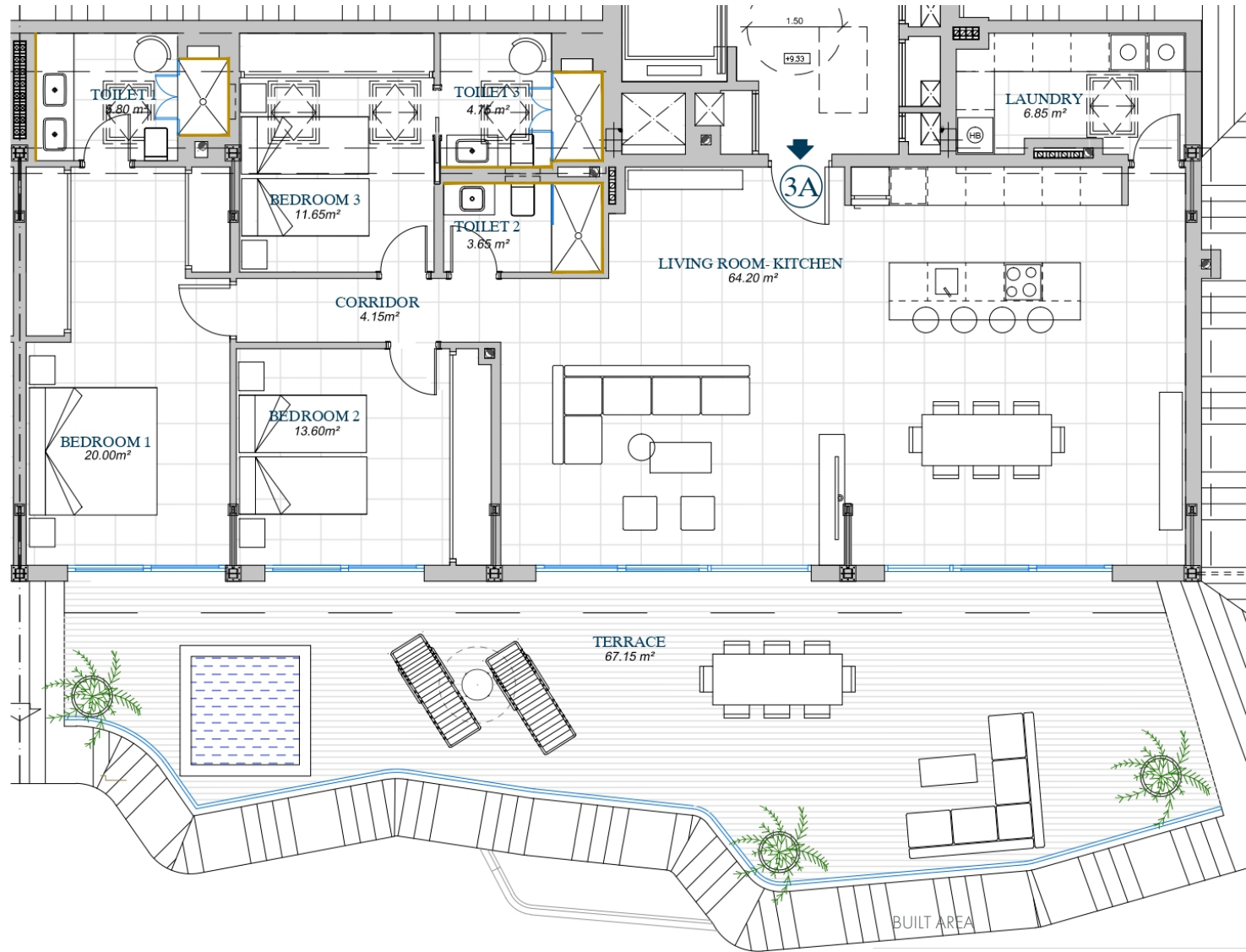
PORTAL 8

APARTMENT Nº 80

3º A



SITE PLAN



AREA ACCORDING TO DECREE 218/2005

Useful Area	148,10 m ²
Built Area	245,05 m ²

Living Area	151,65 m ²
Terrace Area	67,15 m ²
TOTAL BUILT AREA:	218,80 m²

"This plan may be modified according to the development of the Execution Project and the construction. It does not constitute a contractual document. The reflected furnishing is for decoration purposes only. The Project Management reserves the right to make the necessary changes for functional, esthetic and legal reasons that may occur, without implying a decrease in the quality of the construction".



GRAPHIC SCALE

